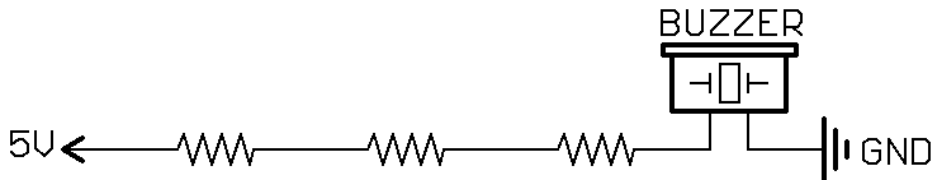


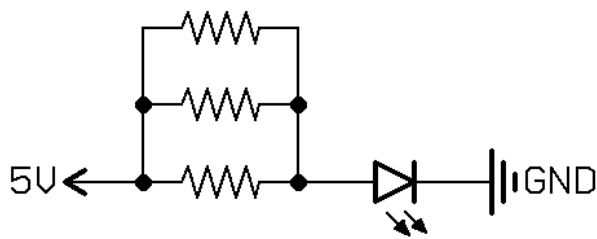
# Activity 5 – Parallel and Series Connections

## Series Connections

Connecting parts all in one line. Adding resistors in series will increase the resistance, lowering the current and making the buzzer quieter.



## Parallel Connections



Connecting parts side-by-side. Adding resistors in parallel lowers the total resistance by making more pathways for the current to flow through. This causes the LED to become brighter.

## Ideas, Questions, Notes